

NETWORK INFRASTRUCTURE PRODUCTS

The Application Fluent Network delivers a high quality user experience

OmniSwitch™ 6850E



- Stackable Gigabit Ethernet LAN switch
 - 24-port and 48-port models with up to four 10GigE uplinks
 - RJ-45, RJ-45 & PoE+ and SFP port versions
 - Advanced L3 routing: VRF, Multicast, IPv4 and IPv6
 - Up to eight switches in local or remote stack (up to 10 km)
 - Optional choice of standard or advanced backup power
 - Optional backup power
 - Universal Network Profiles: Policy-based access
 - SIP Fluency, Traffic Anomaly Detection
 - Metro Ethernet support
- Typical deployment**
- Access switch in converged campus networks
 - Distribution switch in converged campus networks
 - Top-of-rack switch in data centers
 - Carrier and service provider Ethernet access

OmniSwitch™ 6855



- Hardened Gigabit Ethernet LAN switch
 - 10-port, 14-port and 24-port models
 - RJ-45, RJ-45 & PoE+ and SFP port versions
 - 24 SFP port model with 10GigE uplinks; remote stacking up to 10 km
 - Optional backup power
 - Advanced L3 routing: IPv4 and IPv6
 - Universal Network Profiles: Policy-based access
 - Metro Ethernet support
- Typical deployment**
- Ethernet switch in industrial applications
 - Ethernet switch in utility and transportation networks
 - Ethernet access switch in outdoor cabinets
 - Carrier and service provider Ethernet access

OmniSwitch™ 6450 (Models 24 and 48)



- Stackable Fast Ethernet and Gigabit Ethernet LAN switches
 - 24-port and 48-port models with two GigE or 10GigE uplinks
 - RJ-45, RJ-45 & PoE+ and SFP port versions
 - Up to eight switches in local or remote stack (up to 10 km)
 - Optional backup power
 - Soft upgrades: GigE to 10GigE uplinks, Fast Ethernet to GigE access
 - Basic L3 routing: IPv4 and IPv6
 - Universal Network Profiles: Policy-based access
 - Optional license for Metro Ethernet features
- Typical deployment**
- Access switch in converged campus networks
 - Carrier and service provider Ethernet access

OmniSwitch™ 6450 (Model 10)



- Stackable Fast Ethernet and Gigabit Ethernet LAN switch
 - 8-port models, with two GigE uplinks
 - RJ-45 and RJ-45 & PoE+ port versions, all without fans
 - Up to four switches in local stack
 - Soft upgrades: Fast Ethernet to GigE access
 - Basic L3 routing: IPv4 and IPv6
 - Universal Network Profiles: Policy-based access
 - Optional license for Metro Ethernet features
- Typical deployment**
- Classrooms, silent rooms
 - Workgroups, co-locations
 - Small business
 - Carrier and service provider Ethernet access

OmniAccess™ Wireless LAN Controllers



- Chassis-based and fixed form factor models
 - GigE or 10GigE ports to connect LAN
 - Scales to control 1000s of wireless access points
 - 802.11ac ready/capable
 - Optional redundant power
 - Integrated firewall, integrated management
 - Policy-based access
 - Voice over WLAN support (SIP and NOE)
- Typical deployment**
- Control for large-scale indoor and outdoor coverage
 - Control for Wireless Mesh topologies

OmniSwitch™ 6250



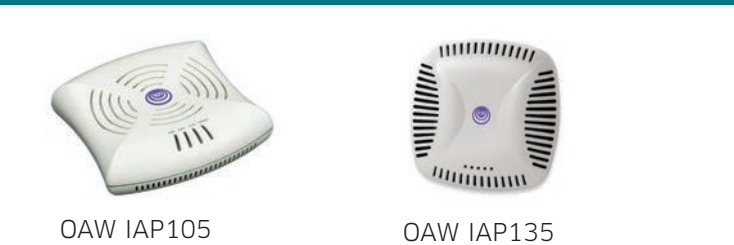
- Stackable Fast Ethernet LAN switch
 - 24-port models with two GigE uplinks
 - RJ-45 and RJ-45 & PoE+ port versions
 - Optional backup power
 - Basic L3 routing: IPv4 and IPv6
 - Up to eight switches in local stack
 - Universal Network Profiles: Policy-based access
 - Optional license for Metro Ethernet features
- Typical deployment**
- Access switch in converged campus networks
 - Carrier and service provider Ethernet access

OmniAccess™ Access Point



- Managed by OmniAccess Wireless LAN Controller
 - Models with 1x1, 2x2 and 3x3 MIMO
 - IEEE 802.11n, dual and single radio models
 - Indoor and outdoor models
 - Models for remote access
 - One or two PoE ports
 - Adaptive Radio Management
 - Integrated wireless security and spectrum analyzer
 - Policy-based access
- Typical deployment**
- Large-scale indoor and outdoor coverage
 - Wireless Mesh topologies

OmniAccess™ Instant Access Point



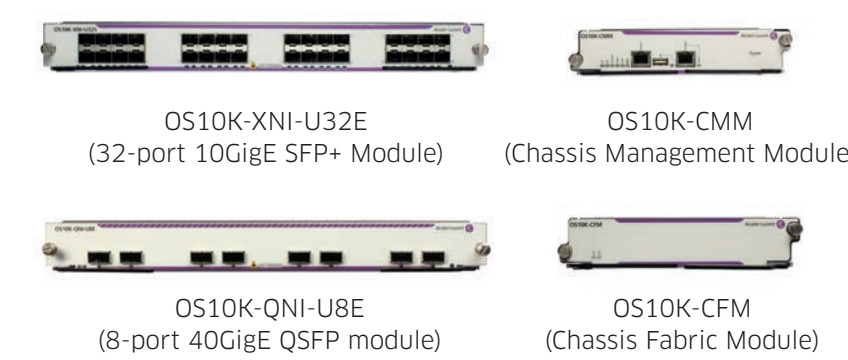
- Controller-less Access Point
 - 802.11ac ready/capable
 - Models with 1x1, 2x2 and 3x3 MIMO
 - IEEE 802.11n, dual and single radio models
 - Indoor and outdoor models
 - One or two PoE ports
 - Adaptive Radio Management
 - Integrated wireless security and spectrum analyzer
 - Policy-based access
- Typical deployment**
- Small and branch office coverage

OmniSwitch™ 10K



- Chassis-based LAN switch with eight line card slots
- 5.12 Tb/s current switching capacity
- Redundant power, management and switch fabric
- Front-to-back cooling
- GigE RJ-45, SFP, SFP+ and QSFP line cards
- Upgradable line cards from 1 to 10GigE by license
- Advanced L3 routing: VRF, Multicast, IPv4 and IPv6
- Automatic fabric creation
- In-Service Software Upgrade, Shortest Path Bridging
- Software Defined Networking: RESTful API, OpenFlow and OpenStack
- Virtual chassis technology

- Typical deployment**
- Core switch in converged networks
 - Core switch in data centers
 - Storage I/O consolidation: multi-hop FCoE



OmniSwitch™ 9000E



- Chassis-based LAN switch with 8 or 16 line card slots
- 768 Gb/s current switching capacity
- Redundant power, management and switch fabric
- GigE RJ-45, SFP and SFP+ line cards
- Advanced L3 routing: VRF, Multicast, IPv4 and IPv6
- Universal Network Profiles: Policy-based access
- In-Service Software Upgrade
- Multi-Chassis LAG technology

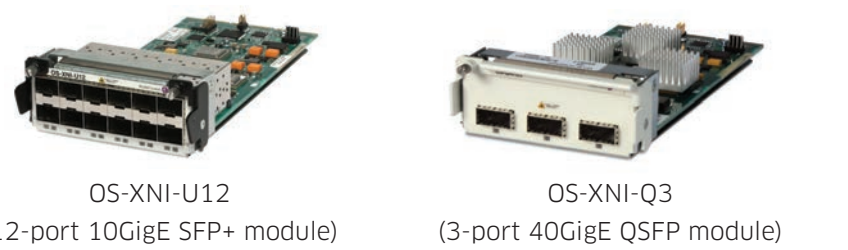
- Typical deployment**
- Core switch in converged networks
 - Access switch in converged networks

OmniSwitch™ 6900



- 1.28 Tb/s switching capacity, sub-microsecond latency
- Redundant power
- Front-to-back or back-to-front cooling models
- 20-port and 40-port models with line card slots
- 10GBase-T and SFP+ port models
- 10GBase-T SFP+, QSFP and SFP+ FC-SFP+ line cards
- Advanced L3 routing: VRF, Multicast, IPv4 and IPv6
- Universal Network Profiles: Policy-based VM movement
- Automatic fabric creation
- In-Service Software Upgrade, Shortest Path Bridging
- Software Defined Networking: RESTful API, OpenFlow and OpenStack
- Mesh Virtual chassis technology

- Typical deployment**
- Core switch in converged networks
 - Distribution switch in converged networks
 - Top of Rack switch in data centers
 - Storage I/O consolidation: FC/FCoE gateway and multi-hop FCoE



Enterprise Services Router 5000



- OmniAccess™ 5710/5720 Enterprise Services Router**
- Compact form factor Services Router with no moving parts
 - OmniAccess 5720 model with one expansion slot
 - 1 GigE port and 4 Fast Ethernet ports
 - Choice of interfaces: LTE, VDSL, SHDSL, E1/T1/ SFP, V.35, X.21, V.24
 - Typical deployment
 - Enterprise Access Network

- OmniAccess™ 5725 Enterprise Services Router**
- Ruggedized Services Router
 - 4-port and 6-port Fast Ethernet models
 - Wi-Fi IEEE 802.11a/b/g/n interface
 - Choice of interfaces: LTE, VDSL, GPS, X.21, V.24
 - Improved communication over cellular networks
 - Typical deployment
 - Vehicle connectivity
 - Pipelines and other industrial environments

- OmniAccess™ 5840/5850 Enterprise Services Router**
- Modular Services Router
 - 2 GigE ports and 8 Fast Ethernet ports
 - Optional PoE+
 - Wi-Fi IEEE 802.11a/b/g/n interface
 - Models with one or two expansion slots
 - VDSL2, ADSL2+, G.HDSL
 - Serial, BRI, SFP, E1/T1
 - FXO, E&M
 - Ability to run GNU/Linux applications
 - Typical deployment
 - Small and medium enterprise
 - Branch office

- OmniAccess ESR WWAN enabler**
- Ethernet-connected cellular interface
 - Fits any Services Router
 - PoE+ powered
 - 3G, 4G, LTE with external antenna adapter
 - Integrated management
 - Typical deployment
 - Non-cabled network access
 - Cellular backup

7750 Service Router



- Chassis-based MPLS router
- 7-slot and 12-slot MDA models
- 4-slot and 12-slot CMA models
- Line cards up to 100GigE
- Line cards with SDH interfaces
- Line cards with classical WAN interfaces
- MPLS, VPLS, VPRN, VLL, PBB, Hierarchical QoS

- Typical deployment**
- Private WAN for large enterprises
 - Data center interconnect

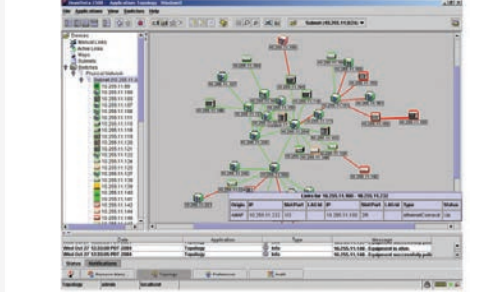
7705 Service Aggregation Router



- Chassis-based and fixed configuration router
- Fixed, 1-module, 8-slot, and 18-slot models
- Line cards up to 10GigE
- Line cards with T1/E1 and SDH/SONET interfaces
- Line cards with legacy voice and data interfaces
- Line cards for CWDM OADM
- MPLS, VPLS, VPRN, pseudowires, Hierarchical QoS

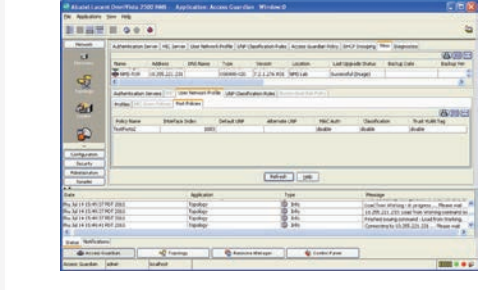
- Typical deployment**
- Private WAN for large enterprises
 - Legacy and TDM services over IP/Ethernet WAN

OmniVista™ 2500 NMS



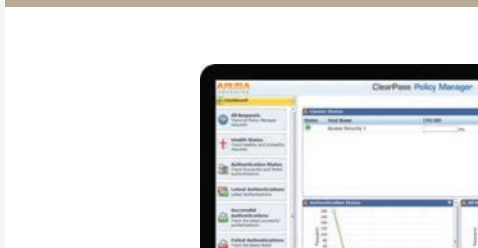
- Comprehensive network management system
- Configure, monitor and troubleshoot networks
- Network-wide bulk configuration and firmware management
- OneTouch administration for policy-based access, SIP snooping profiles
- Simplified management for user-based network role profiles
- Unified troubleshooting and deployment for BYOD solutions
- Automated quarantine management for improved security

OmniVista™ 2500 VMM



- Optional module for OmniVista 2500 NMS focusing on data center operations
- Provision data center infrastructure to assist VM deployment
- Enable automated moves for VMs in the data center
- Track VM location and monitor their connections with physical network infrastructure from a single pane of view
- Performance analysis and SLA reporting for VM to VM network path
- Interfaces with VMware vCenterTM and Citrix XenServer hypervisors for further automation

ClearPass Policy Manager



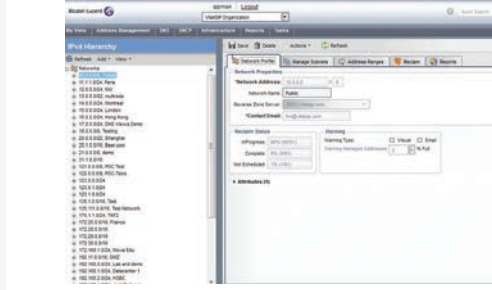
- One place to manage all things BYOD
- Wireless network management system
 - Centralized visibility and control over wireless networks
 - Real-time user and device monitoring
 - Centralized configuration
 - User, session and device monitoring
 - Real-time location tracking information
 - RF planning with VisualRF module

VitalSuite®



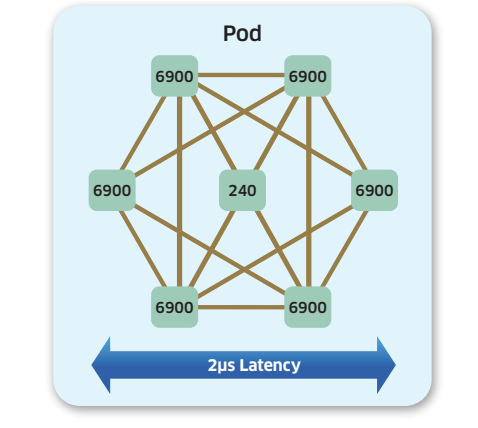
- Performance management system for applications and networks
- Web2.0 dynamic GUI interface with easy-to-use workflow
- Multivendor, multi-tenant and multi-technology with IPv4/IPv6 support
- Real-time end-user application transaction monitoring
- Monitoring of network infrastructure devices and services
- Monitoring of telephony systems, contact centers, virtualization and data center environments
- Centralized view with advanced thresholds, 2D/3D topology views and trap receiver
- Extensive built-in and custom reporting capabilities

VitalQIP®



- DNS/DHCP IP management system
- Scales to 100,000s of managed addresses
- Comprehensive BIND syntax check
- ENUM functionality
- Automated configuration of multivendor DNS/DHCP managers
- Integrates with CyberGatekeeper
- Software and purpose-built appliance versions
- Software appliance for virtual environment version

Data Center Switching



Low latency Data Center Fabric

- Revolutionizes data center network architecture by automating data center networking
- Prepares for automation of the entire data center with software defined networking
- Provides an application fluent network to meet the need for a high-quality user experience with real-time applications such as OpenTouch™ Conversation and virtual desktops
- Automates many activities such as virtual machine movement, provisioning and troubleshooting

An award-winning solution that revolutionizes data center network architecture bringing automation to data center networking and prepares for automation of the entire data center with SDN. It provides an application fluent network to meet the need for a high-quality user experience with real-time applications such as OpenTouch™ Conversation and virtual desktops, while automating many activities such as virtual machine movement, provisioning and troubleshooting. With this solution, your company can virtualize your data center network to meet the new needs for delivery of real-time applications while reducing costs.

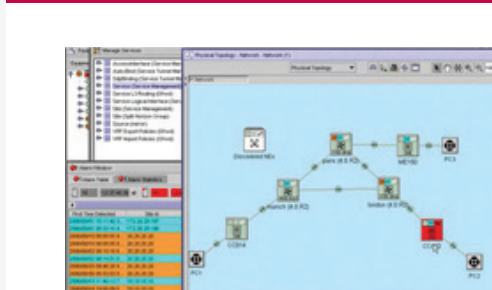
- Market leading features**
- High-performance standards based data center fabric
 - Scales from under 100 physical servers to many 1000s of servers
 - Low-cost entry point (no expensive chassis switch required) with pay-as-you-grow model
 - Rich data center partner ecosystem ensures your success when selecting a best-of-breed data center fabric

ECO Partners



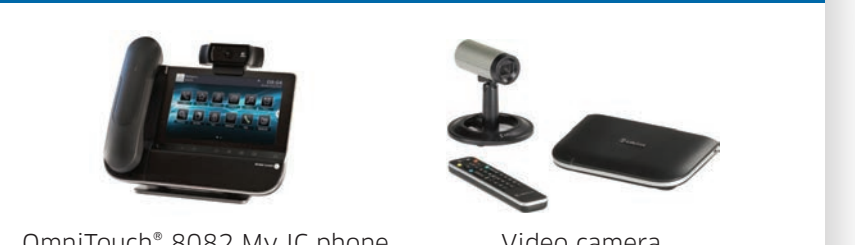
- Alcatel-Lucent proves interoperability through extensive interoperability testing with mainstream storage and virtualization vendors such as VMware, QLogic and Emulex. This unique solution enables any size of organization to deploy its own affordable data center fabric.
- VMware interoperability with Mesh and Virtual Machine Management
 - QLogic CNA (Converged Network Adapters) interoperability
 - Interoperability with Emulex OneConnect™ 10 GigE Network Interface Cards (NICs)
 - NetApp storage and Mesh provide an improved Hadoop™ architecture
 - Application Fluent Network combined with Citrix CloudBridge technology benefit end-users as well as IT teams

5620 Service Aware Manager (SAM)



- Element, network and service management system
- Visualization of physical, MPLS, service topology and status
- Accelerated and reliable provisioning
- Comprehensive monitoring, troubleshooting and root cause analysis
- Performance management and SLA assurance capabilities
- Integration with 5650 Control Plane Assurance Manager (CPAM)

Converged Campus Networks



- Alcatel-Lucent Enterprise's Application Fluent Network approach for enterprise networks is a complete converged network solution.
- Market leading features**
- Resiliency for uninterrupted operations
 - Right-sized core switches for cost efficiency
 - Unification of wired and wireless access for user/IT efficiency
 - BYOD enabled from guest to smartphone/smartPAD
- This unique solution extends the reach of the corporate network with an innovative, simplified and virtualized architecture that supports a range of converged network infrastructures including small-to-large single sites, multi-sites, and global offerings.